

DIGITAL DISPLAY

for industrial applications



Content:

Technical Data2
Technical Drawing3
Models And Accessories3

Series WAY-AX

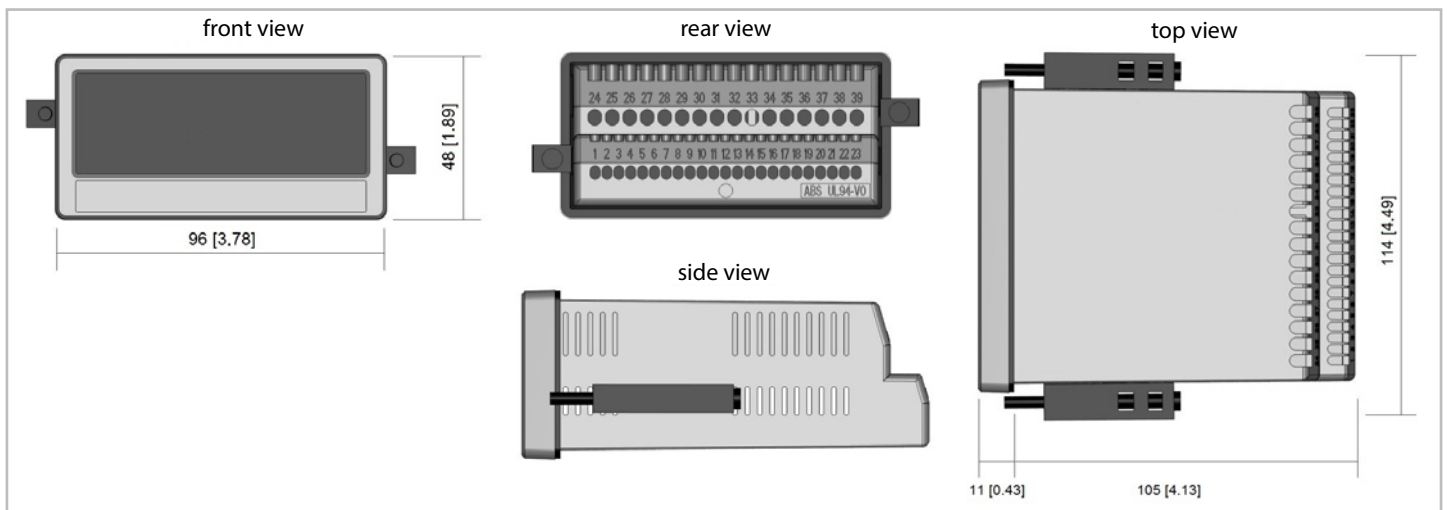
Key-Features:

- Multifunctional display with touchscreen
- Display range: 8 digits plus sign
- Inputs analog: -10...10 V, 0...10 V, 0...20 mA, 4...20 mA
- High accuracy reference output 10 V for potentiometers >1 k Ω
- Sensor supply: 24 VDC
- Possible options (all combinable):
 - Option AC: power supply 115...230 VAC
 - Option AO: analog output, 4 control outputs and RS232 interface
 - Option CO: 4 control outputs and RS232 interface
 - Option RL: 2 relay outputs
 - Option CR: 4 control outputs, RS485 interface

TECHNICAL DATA

Display	Type: Graphic LCD with backlight and touchscreen Display range: 8 digits plus sign (-99999999...99999999) Digit height (single + dual): 13 mm (0.51 inch) Digit height (large display): 26 mm (1.02 inch) Colour: red / green / yellow (selectable)
Connections	screw terminal, 1.5 mm ² / AWG 16
Power supply DC	Input voltage: 18...30 VDC Consumption: approx. 100 mA (unloaded) Fuse protection: external: T 0.5 A Protection circuit: reverse polarity protection
Power supply AC (Option AC)	Input voltage: 115...230 VAC ±10 %, (50 ... 60 Hz) Power consumption: approx. 3 VA (unloaded) Fuse protection: external: T 1.0 A
Encoder supply (DC Version)	approx. 1 V lower than the power supply voltage, max. 250 mA
Encoder supply (AC Version)	approx. 24 VDC (±15 %), max 150 mA until 45 °C resp. 113°F/ 80 mA by more than 45 °C resp. 113°F
Analog inputs	Number of inputs: 2 Configuration: current or voltage operation Voltage input: -10...+10 V (Ri ≈ 33 kΩ) Current input: 0...20 mA / 4...20 mA (Ri ≈ 100 Ω) Resolution / Accuracy: 16 bit / ±0,1 %
Control inputs	Number of inputs: 3 Format: HTL, PNP (Low 0...3 V, High 9...30V) Frequency: max. 1 kHz Reaction time: 1 ms Load: max. 2 mA at 24 VDC
Analog output (Option AO / AR)	Voltage output: -10...+10 V (max. 2 mA) Current output: 0/4...20 mA (burden: max. 270 Ω) Resolution: 16 Bit Accuracy: ±0.1 % 0 °C ... +45 °C / ±0.1 % +32 °F ... +113 °F ±0.15 % -20 °C ... 0 °C and +45 °C ... +60 °C / ±0.15 % -4 °F ... +32 °F and +113 °F ... +140 °F Reaction time: <10 ms
Control outputs (Option AO / AR / CO / CR)	Number of outputs: 4 Format / level: 5...30 V (depend on the COM+ voltage), PNP Output current: max. 200 mA Reaction time: <1 ms
Relay outputs (Option RL)	Number of outputs: 2 Configuration: potential free changeovers AC-Switching capacity: max. 250 VAC / 3 A / 750 VA DC-Switching capacity: max. 150 VDC / 2 A / 50 W Reaction time: <20 ms
Serial interface (Option AO / AR / CO / CR)	Format (AO / CO): RS232 Format (AR / CR): RS485 Baud rate: 9600, 19200 or 38400 baud
Working temperature	-20...+60 °C resp. -4 °F... +140 °F (non condensing)
Storage temperature	-25...+70 °C resp. -13 °F... +158 °F
Ambient conditions:	Altitude: max. 2000 m (6560 ft) above sea level Humidity: max. 80 % relative humidity up to 30 °C / 86 °F Pollution Degree: 2
Housing	Material: ABS, UL 94 V-0 Dimensions: 96 x 48 x 116 mm
Panel cut out	91 x 43 mm
Protection class	IP65 (front), IP20 (rear)
Weight	approx. 200 g
Conformity and standards	EMC 2014/30/EU: EN 61326-1: 2013 for industrial location EN 55011: 2016 + A1: 2017 + A11: 2020 Class A LV 2014/35/EU: EN 61010-1: 2010 + A1:2019 + AC: 2019-04 LV 2014/35/EU: (Only for option AC and RL): EN IEC 61010-2-201: 2018 RoHS (II) 2011/65/EU RoHS (III) 2015/863: EN IEC 63000: 2018

TECHNICAL DRAWING



HOUSINGS

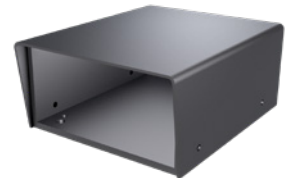
Aluminium housing GEH0IP65

- black powder coating
- internal grounding terminal
- protection class: IP65
- dimensions (W x H x D): 168 x 83 x 220 mm
- delivery: housing, mounting material
- without cable passages (must be drilled individually)



Table housing TG9648

- for all displays with front dimensions 96 x 48 mm
- dimensions (W x H x D): 114 x 62 x 176 mm
- delivery: housing, mounting material



MODELS

WAY-AX-S	Process Indicator
WAY-AX-RL	Process Indicator with 2 relay outputs
WAY-AX-AO	Process Indicator with RS232 interface, analog and 4 control outputs
WAY-AX-CO	Process Indicator with RS232 interface and 4 control outputs
WAY-AX-CO-RL	Process Indicator with RS232 interface, 4 control and 2 relay outputs
WAY-AX-AO-RL	Process Indicator with RS232 interface, analog , 4 control and 2 relay outputs
WAY-AX-AC	Process Indicator with AC supply
WAY-AX-AC-RL	Process Indicator with AC supply and 2 relay outputs
WAY-AX-AC-AO	Process Indicator with AC supply, RS232 interface, analog and 4 control outputs
WAY-AX-AC-CO	Process Indicator with AC supply, RS232 interface and 4 control outputs
WAY-AX-AC-AO-RL	Process Indicator with AC supply, RS232 interface, analog, 4 control and 2 relay outputs
WAY-AX-AC-CO-RL	Process Indicator with AC supply, RS232 interface, 4 control and 2 relay outputs

ACCESSORIES

TG9648	Table housing
GEH0IP65	Aluminium housing, IP65
Preset Display Analog	Pre-adjustment according to customer specifications

Subject to change without prior notice.

WayCon Positionsmesstechnik GmbH

email: info@waycon.de
internet: www.waycon.biz

WayCon

Positionsmesstechnik

Head Office

Mehlbeerstr. 4
82024 Taufkirchen
Tel. +49 (0)89 67 97 13-0
Fax +49 (0)89 67 97 13-250

Office Köln

Auf der Pehle 1
50321 Brühl
Tel. +49 (0)2232 56 79 44
Fax +49 (0)2232 56 79 45